



## Bellstar Instruments Inc.

3022 N.Durfee Ave, Suite B El Monte, CA91732 USA

Tel: (626) 320 7625 Fax: (626)575 0883 Email: info@bellstarinstrument.com

### WEISCAN SYSTEM—Gravimetric Dosing System

#### System Functions:

The best solution for material saving in the field of plastic extrusion industry, can meet the dual requirements of customers on quality improvement and material saving. Through the real time measurement and control on the extrusion output and per meter weight of continuous production, the system can obtain the most detailed production plan and ensure the stability of production process.

#### Technology Advantages:

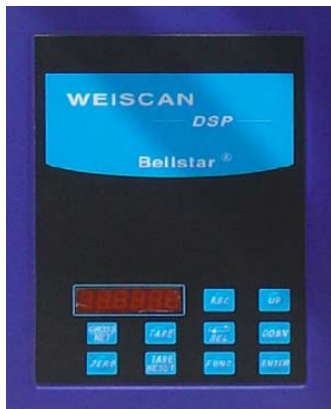
- Adopt special high speed data collection module
- Spot calibration function
- Adopt high speed data collection software with aseismatic calculation
- Independent hypogyny processor
- IP65 that can apply for bad environment
- Multi-component operation (up to six components)

#### WEISCAN System Structure:

It is composed of Mechanical structure, DSP and MCS.

#### Characteristics of Mechanic Structure:

- Unique aseismatic and balance structure
- Redundance technology
- Simple installation



Digital Signal Processor (DSP)

#### WEISCAN DSP

It can realize the spot collection, processing and transportation of weight data, and then using it for understratum calculation. It was installed in the support of gravimetric system or independently.

#### Options:

- Screw rotate speed counter
- Puller speed encoder
- Quality mark/ cutting control unit

#### Asia Representative Office:

Rm.202, Section C2, Innovation Building No.182, Science Road, Science City, Guangzhou 510063, P.R. China  
Tel.: +86 21 688 877 08 Fax: +86 21 688 877 01 EMAIL: sales@bellstarinstrument.com

©2010 Bellstar Instruments Inc. Specifications are subject to change without notice.

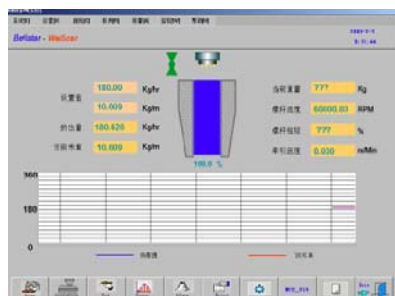


## Bellstar Instruments Inc.

3022 N.Durfee Ave, Suite B El Monte, CA91732 USA

Tel: (626) 320 7625 Fax: (626)575 0883 Email: info@bellstarinstrument.com

### Options for WEISCAN System and Related Parameters



Mode	Extrusion Output	Resolution
WEISCAN-03	1-50	±0.8%
WEISCAN-08	15-300	±0.8%
WEISCAN-22	80-1000	±0.8%
WEISCAN-48	150-1500	±0.8%

Mode Extrusion Output Resolution

### Technical Index

Integrated display and control unit – MCS

Performance	Parameters
Quantity of scanner can be connected with	no limitation
Table display	have (can display multi-layer
Statistics	multi-channel
Trend chart	multi-channel
Print output	Have (defined by the user)
Data record	Have (defined by the user)
Communication mode	RS232/485 and other kinds of communication mode
Ethernet network link	Have (10/100 Base T)
Alarm Output	Have
Recipe	Have (no limitation)
Security	3 degrades
Long-distance display output	VGA
I/O	According to requirements to allocate integrative type or I/O independent module

### Asia Representative Office:

Rm.202, Section C2, Innovation Building No.182, Science Road, Science City, Guangzhou 510063, P.R. China

Tel.: +86 21 688 877 08 Fax: +86 21 688 877 01 EMAIL: sales@bellstarinstrument.com

©2010 Bellstar Instruments Inc. Specifications are subject to change without notice.